



Live *life* here

**Lennar**

[lennar.com](http://lennar.com)

**Springwood at Gladden Farms**

**Series: ■ Americana**

Our community's final neighborhood featuring stylish single- and two-story homes with modern, low-maintenance layouts. Enjoy a versatile loft, spacious patio and a convenient location near the community's newest K-8 school.

  
**GLADDEN  
FARMS**

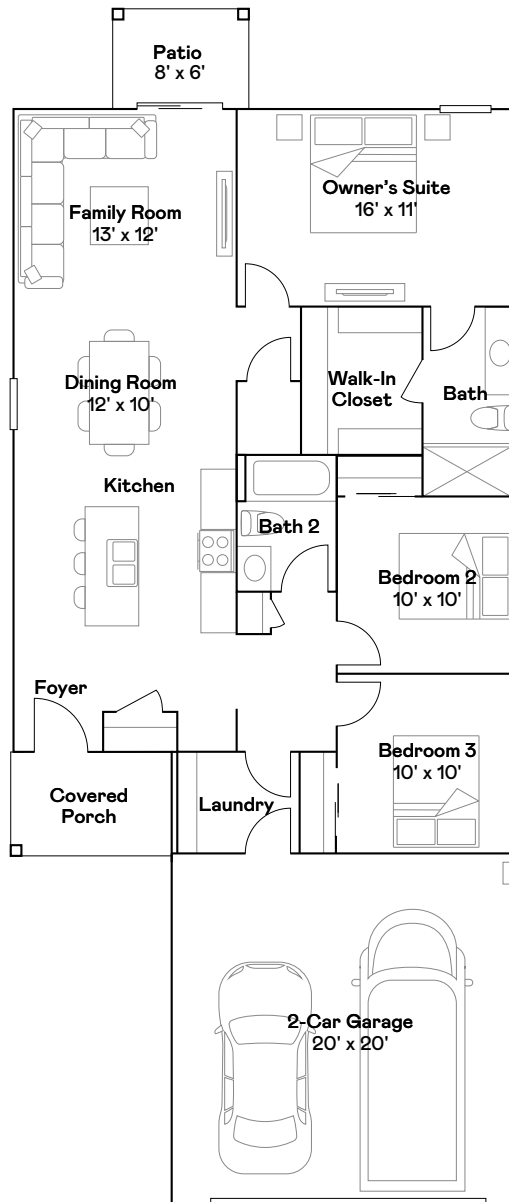
[Gladdenfarms.com](http://Gladdenfarms.com)

**Homes:** 1,264 - 2,114 sq. ft.

**Bedrooms:** 3 to 5

**Bathrooms:** 2 to 2.5

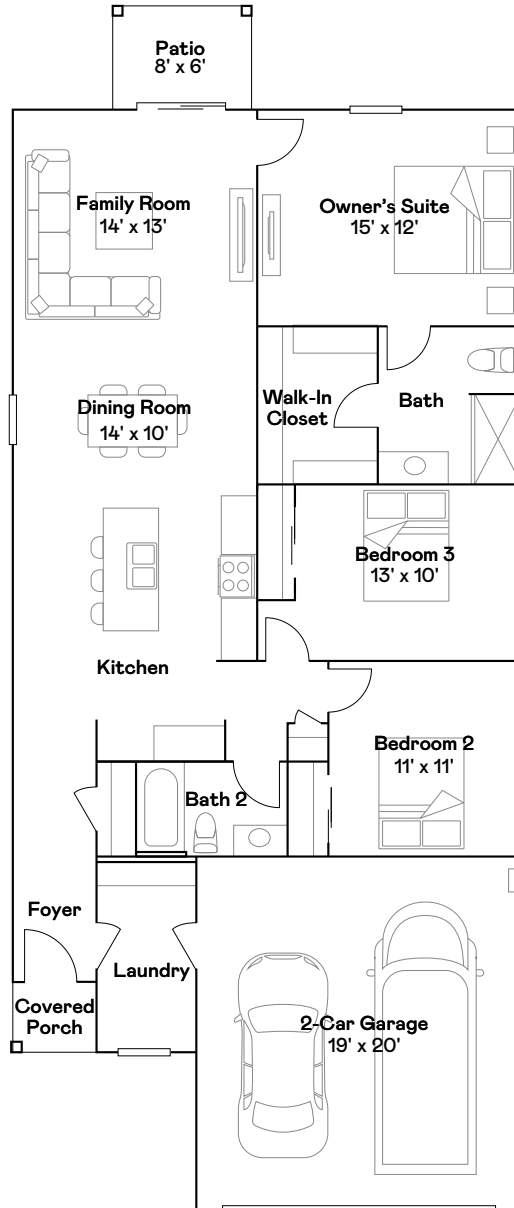
**Garage:** 2 cars



3 br / 2 ba — Single Story

## Abbey

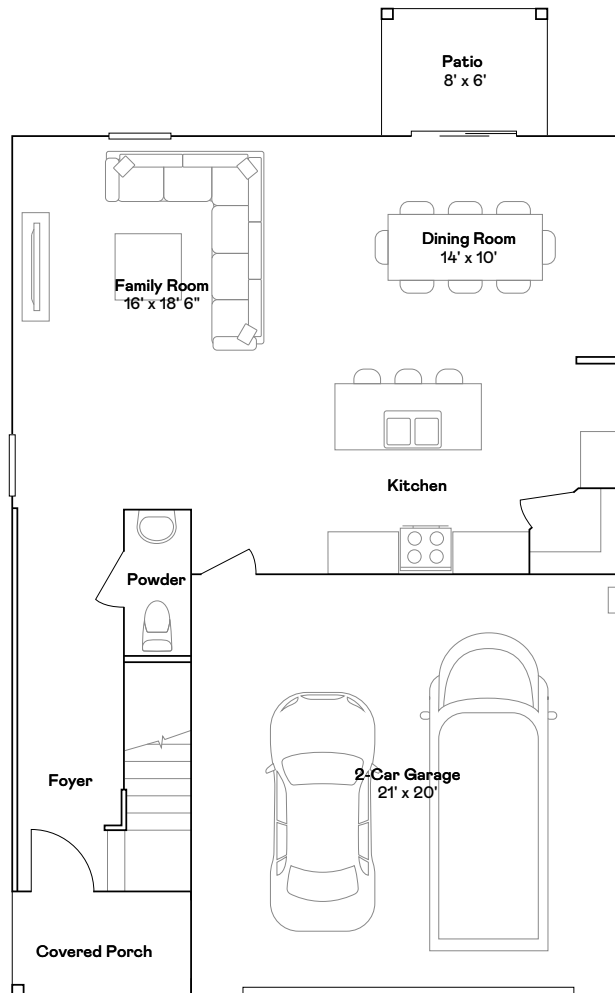
- 3 Bedrooms
- 2 Bathrooms
- 1,264 sq. ft.



3 br / 2 ba — Single Story

## Belmont

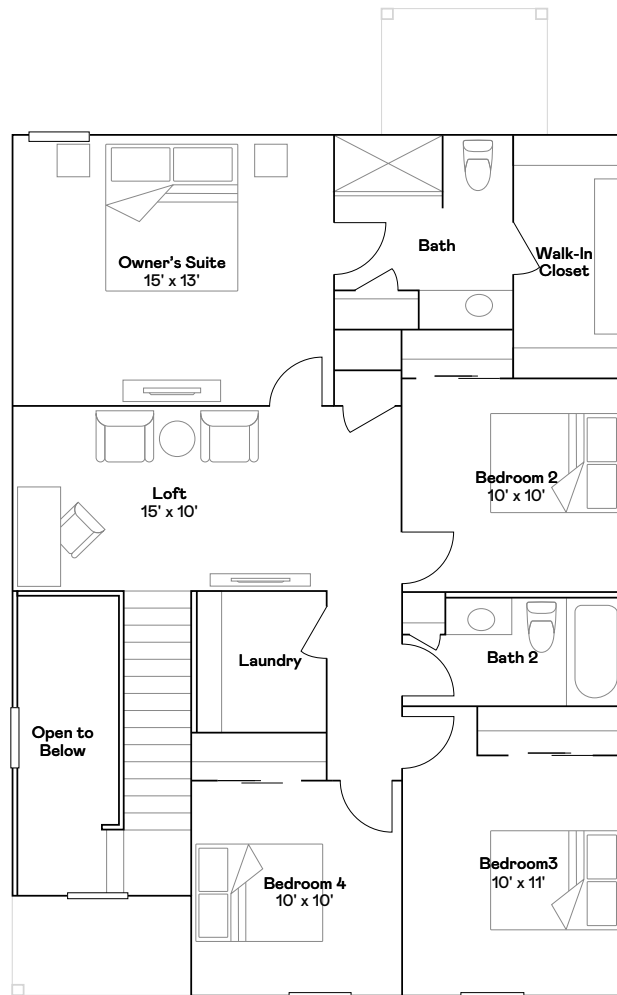
- 3 Bedrooms
- 2 Bathrooms
- 1,425 sq. ft.



4 br / 2.5 ba — First Floor

## Columbus

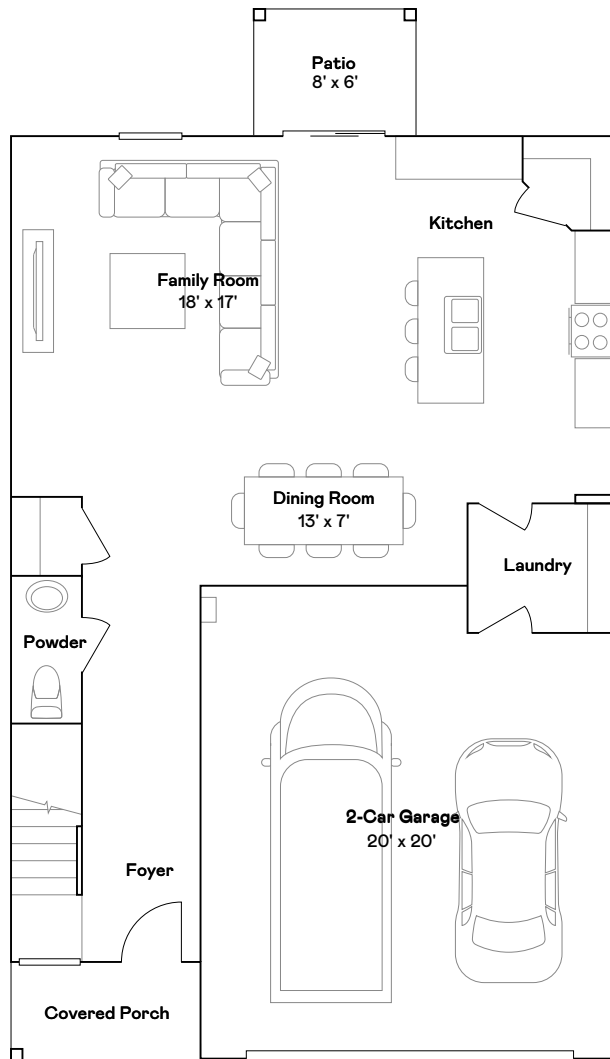
- 4 Bedrooms
- 2.5 Bathrooms
- 1,880 sq. ft.



4 br / 2.5 ba — Second Floor

## Columbus

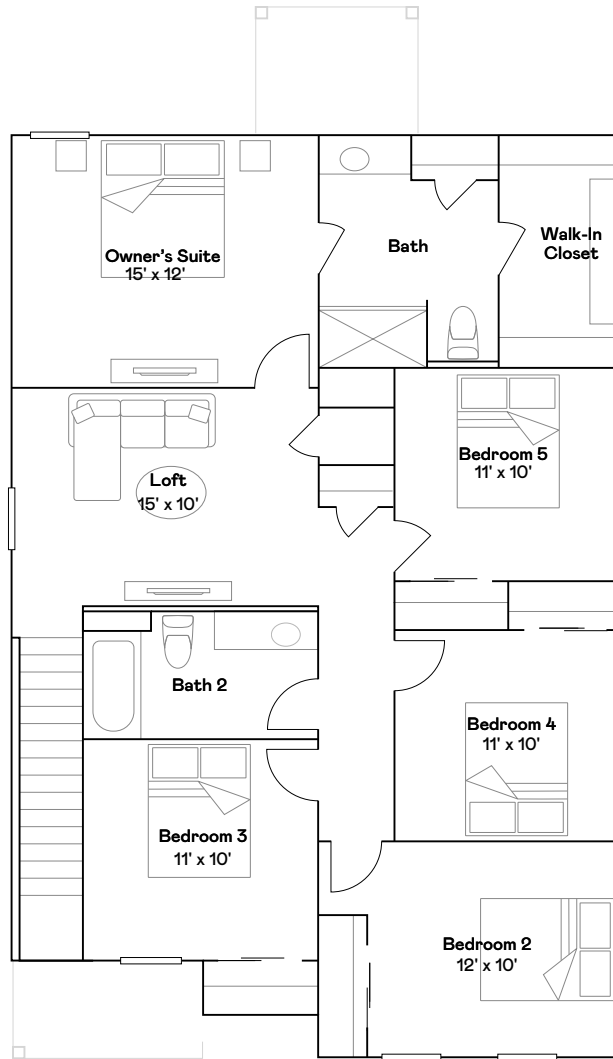
- 4 Bedrooms
- 2.5 Bathrooms
- 1,880 sq. ft.



**5 br / 2.5 ba — First Floor**

## **Edison**

- 5 Bedrooms
- 2.5 Bathrooms
- 2,114 sq. ft.



5 br / 2.5 ba — Second Floor

## Edison

- 5 Bedrooms
- 2.5 Bathrooms
- 2,114 sq. ft.



**LENNAR<sup>®</sup>**

[lennar.com](http://lennar.com)

Prices and features may vary and are subject to change.  
Photos are for illustrative purposes only.