



Live *life* here

## Mattamy Homes

[mattamyhomes.com](http://mattamyhomes.com)

### Glenmere at Gladden Farms

A vibrant neighborhood of stylish single and two-story homes featuring a playground with play structures, kids ziplines and a dinosaur fossil dig area.

**Homes:** 1,837 to 2,802 sq. ft.

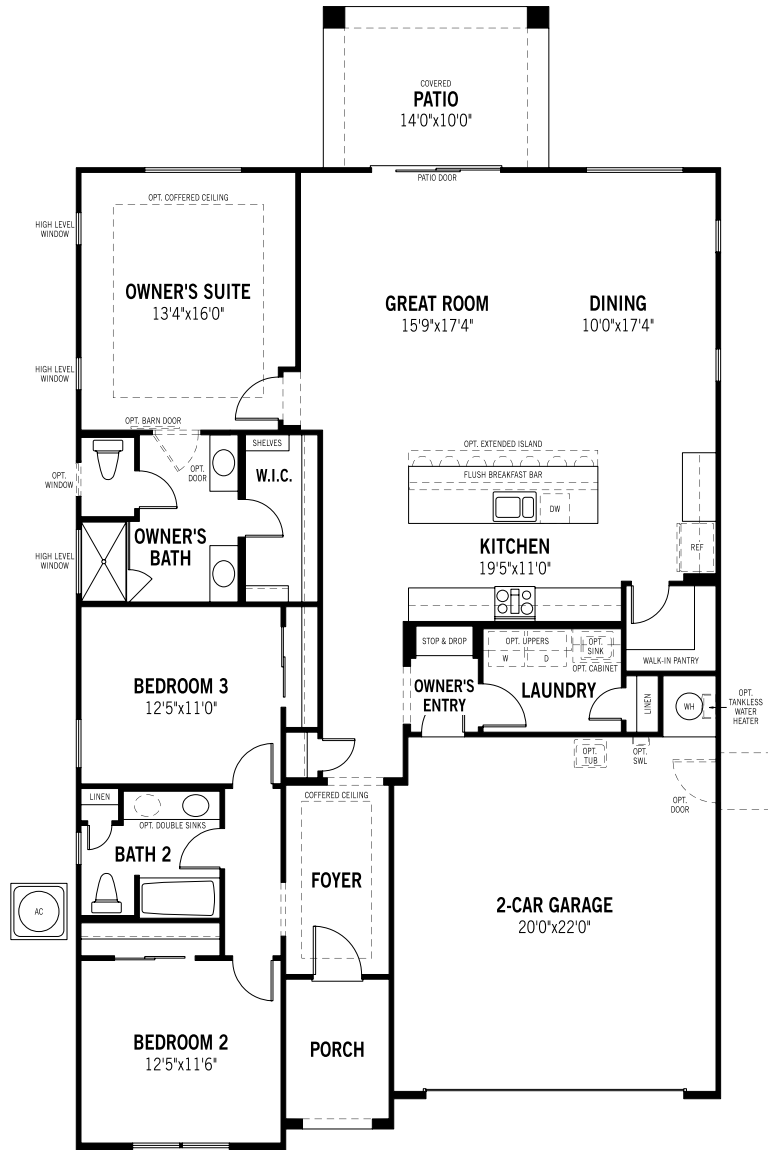
**Bedrooms:** 3 to 4

**Bathrooms:** 2 to 3.5

**Garage:** 2 to 3 cars

  
**GLADDEN  
FARMS**

[Gladdenfarms.com](http://Gladdenfarms.com)

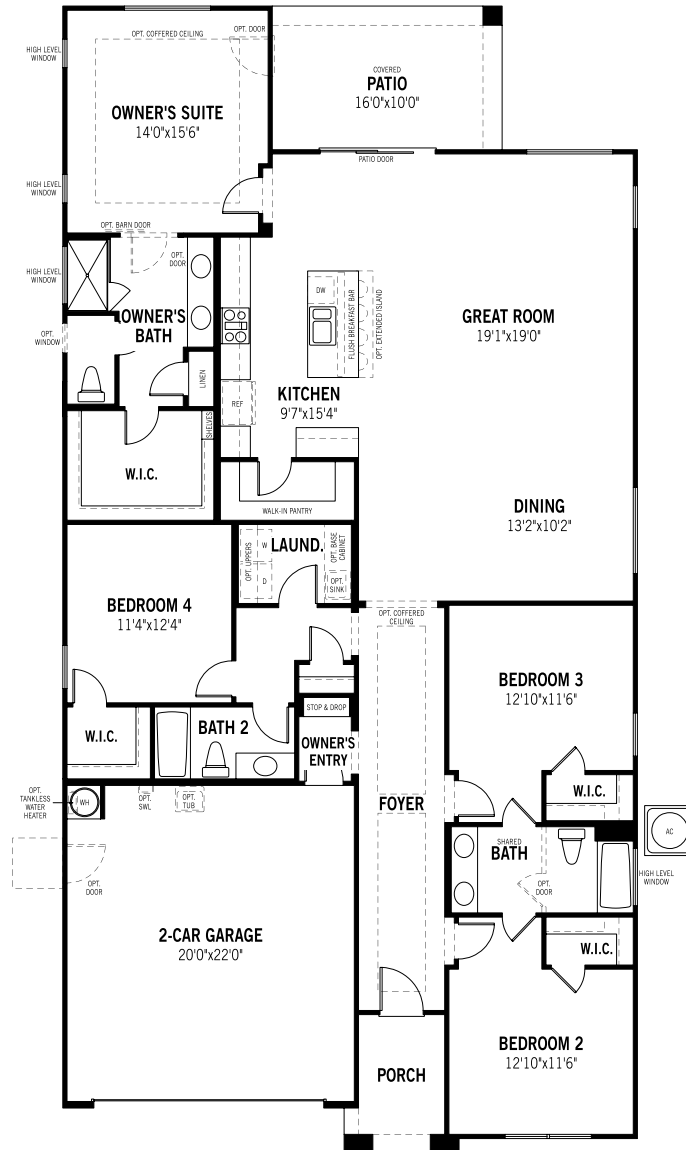


3 br / 2 ba — 1 Story

# Aqua

- 3 Bedrooms
- 2 Bathrooms
- 1,837 Sq. Ft.
- 2 Car Garage

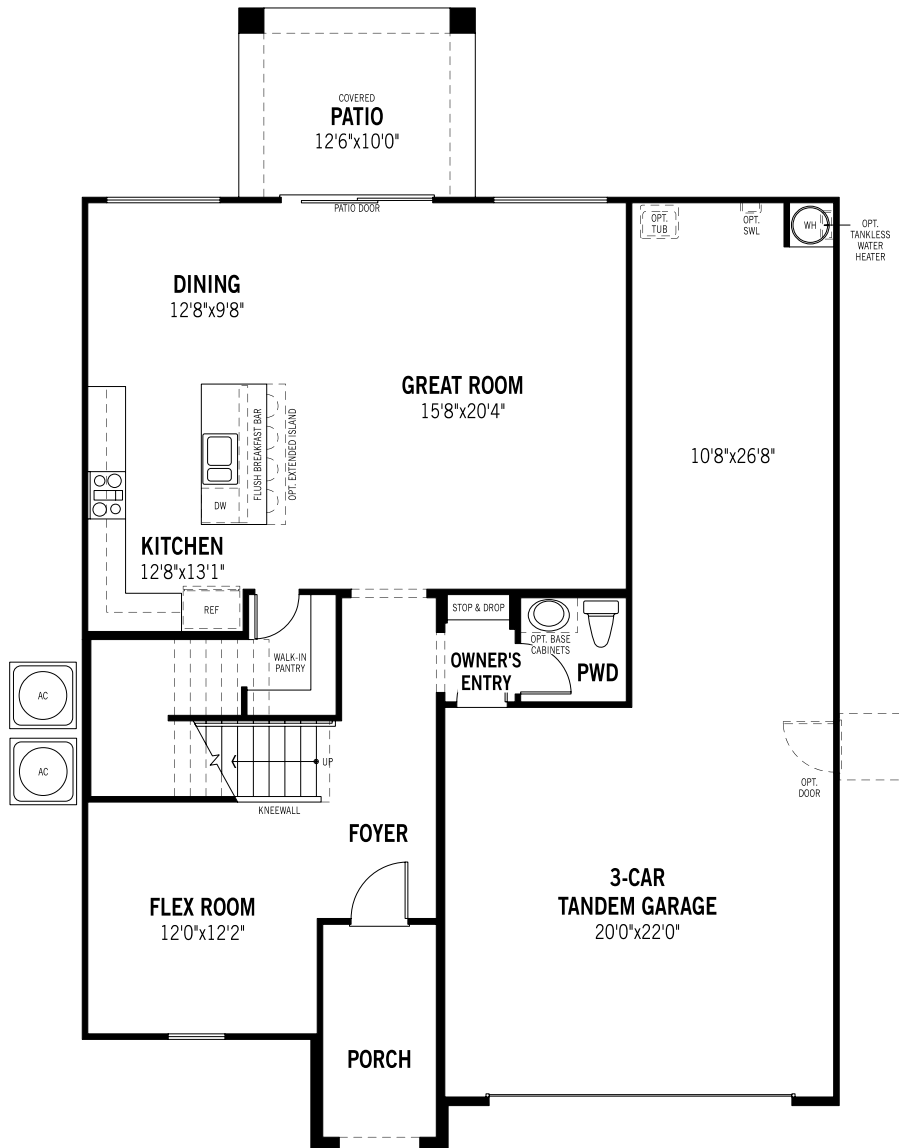




4 br / 3 ba — 1 Story

## Cobalt

- 4 Bedrooms
- 3 Bathrooms
- 2,334-2,364 Sq. Ft.
- 2 Car Garage



4 br / 2.5 ba — First Floor

## Lagoon

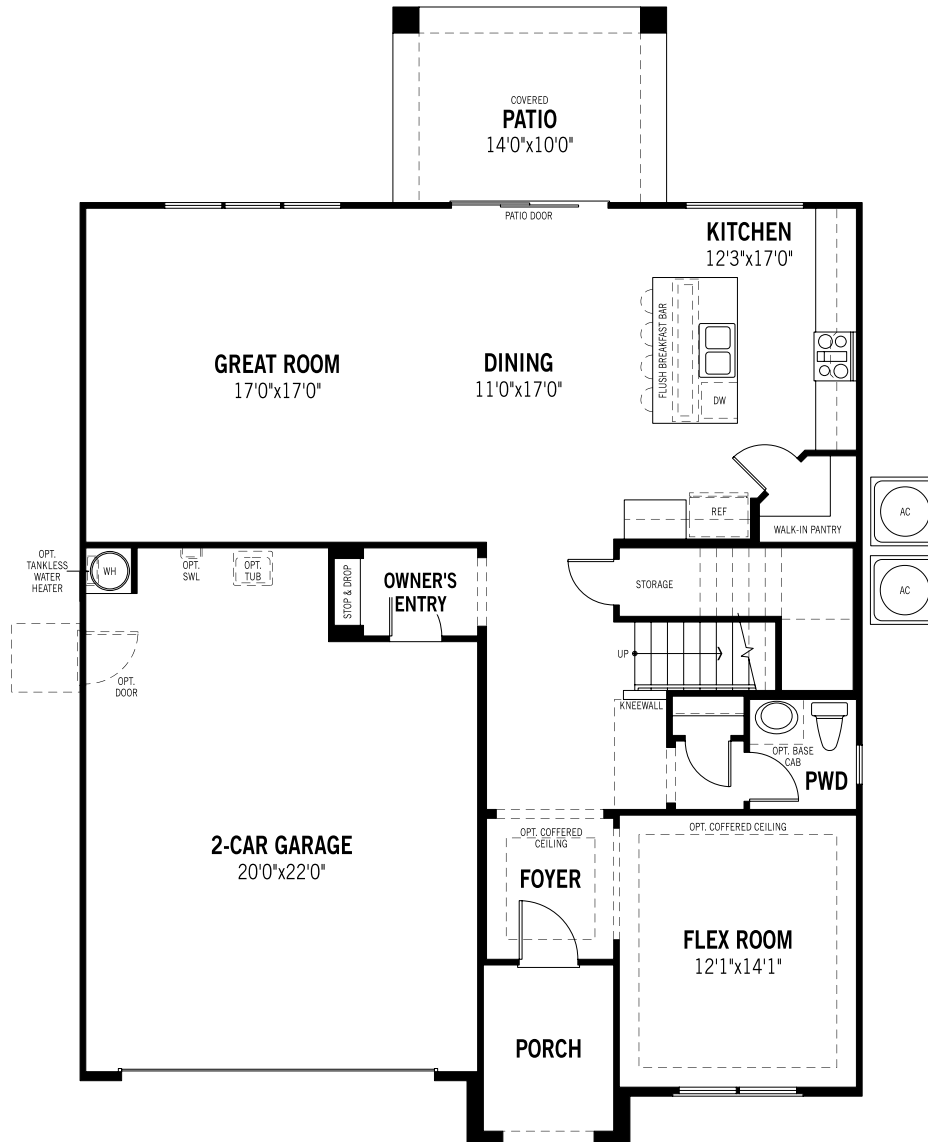
- 4 Bedrooms
- 2.5 Bathrooms
- 2,645-2,665 Sq. Ft.
- 3 Car Garage



4 br / 2.5 ba — Second Floor

## Lagoon

- 4 Bedrooms
- 2.5 Bathrooms
- 2,645-2,665 Sq. Ft.
- 3 Car Garage



4 br / 3.5 ba — First Floor

## Pacific

- 4 Bedrooms
- 3.5 Bathrooms
- 2,757-2,802 Sq. Ft.
- 2 Car Garage



4 br / 3.5 ba — Second Floor

## Pacific

- 4 Bedrooms
- 3.5 Bathrooms
- 2,757-2,802 Sq. Ft.
- 2 Car Garage





GLADDEN  
FARMS



[mattamyhomes.com](http://mattamyhomes.com)

Plans and elevations are artist's renderings and may contain options which are not standard on all models. Mattamy Homes reserves the right to make changes to these floorplans, specifications, dimensions and elevations without prior notice.

Stated dimensions and square footage are approximate and should not be used as a representation of the home's precise or actual size. Square footage of single-family homes is generally based upon ANSI Z765-2003 but may vary from time to time and without notice. Square footage of multi-family homes are generally based upon ANSI BOMA Z65.1-1996 but may vary from time to time and without notice.  
Revision: 8/4/2022

**Your new**  
***neighborhood***  
**awaits**